

LOCAL HISTORY KNOWLEDGE ORGANISER

Disciplinary Knowledge

- Know the impact that the discovery of coal and Dhustone had on Clee Hill.
- Know why quarrying led to more houses, schools and school being built in Clee Hill
- Know why the radar station of built on Clee Hill and its key purpose at the time.
- Similarities' and differences between quarrying on Clee Hill in the past and present day

Substantive Concepts

Settlement There is evidence of the first settlers being on Clee Hill since the Bronze Age as there is a Cairn near the summit which is over 4000 years old. I

Discovery

Coal was first discovered on Clee Hill as early as the 13th century

Dhustone was first quarried in the early 20th century. The word Dhustone is a local word meaning Black Stone. It is famous for making some of the best roads in te world, including some Formula 1

Timeline

1300 Mappa Mundi – Clee Hill is on the map



1200s - 1920s– Coal mining on Clee Hill



1863 – Mining of Dhustone starts



1941 – Radar Station set up on Clee Hill



1970s – Clee Hill School opened



Clee Hill in the Past



Clee Hill in the Present Day



Early History of Clee Hill

- Mappa Mundi – Clee Hill is on the map
- 1200s - 1920s– Coal mining on Clee Hill
- 1863 – Mining of Dhustone starts
- 1941 – Radar Station set up on Clee Hill



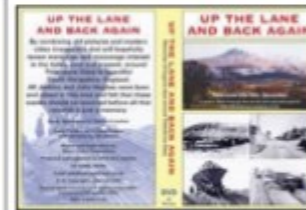
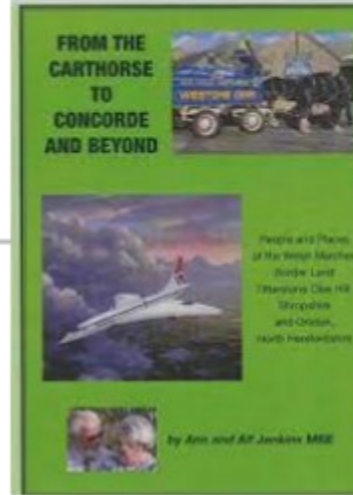
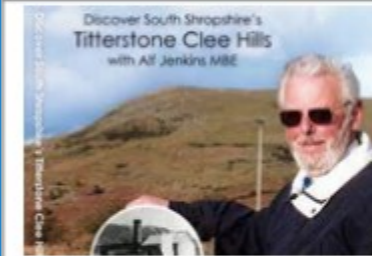
Significant Individuals from the Local Community

Alf Jenkins



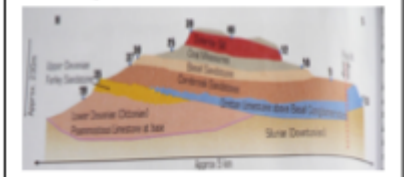
What They Are Known For

Book review, interview with Alf, Clee Hill dialect



Quarrying in Clee Hill

In the early 20C quarrying activity moved on to Clee Hill. From here [e.g. Magpie Quarry] the stone was transported by overhead cableway to a railhead near Cleobury Mortimer. In the 1860s 2000 men worked in the quarries and in 1910 400 000 tons of rock were extracted. The Dhustone is still quarried by Midland Quarry Products



National Curriculum Objectives:

KS1—significant historical events, people and places in their own locality

KS1 - changes within living memory. Where appropriate, these should be used to reveal aspects of change in national life

Key Vocabulary:

similar, a long time ago, history, ancient, century, present, civilisation, chronology, chronological, duration, sequence, archaeology, archaeologist, explorer, artefact, locality, community, radar station, quarry, heritage

What amenities were built on Clee Hill to support the growing community?

Similarities and differences between quarrying today and the past.

Quarrying for coal



Why did people settle on Clee Hill?



Mining for limestone



Clee Hill Quarry—how does it work and what does it do?



How do we know how Clee Hill looked in the past?



Map of Clee Hill from 1300



Current Map of (local area)

