

Newsletter November



Friday 10th November 2023

13.11.23 - Start of antibullying week - Wear blue to beat bullying

17.11.23 - Children in Need (wear spotty and bring a donation)

Poppy Competition Winners

- Nursery & KSI Artistic competition winner - Amelia M (Nursery)
- Nursery & KSI Information competition winner - Aurora (Class 2)
- KS2 Artistic competition winner - Skylar (Class 3)
- KS2 Creative competition winner - Talia (Class 5)
- KS2 Artistic competition winner - Ruth (Class 3)
- Special Mention - Lynk Hubbard (Class 4)

Next Monday is the start of Antibullying week and we will start the week (Monday 13th November) by wearing blue clothes to beat bullying and odd socks to celebrate differences. The children do not need to bring in any money for this.

The school Remembrance service was held at the village hall this morning. The Rotakids presented the service with each class reading poems and singing songs. Everyone was amazing. Refreshments were served afterwards to raise money for The British Legion. £123.54 was raised! Well done Clee Hill Community Academy.



RotaKids made poppies for the Remembrance service.



"Good afternoon, I just wanted to thank the staff and children from myself and all the residents for the lovely display of poppies on the long fence in front of Clee Hill Three Crosses scheme. It looks absolutely beautiful. Many thanks, Cathy Saunders"

Independent Living Co-ordinator - Three Crosses & Forrester's Road

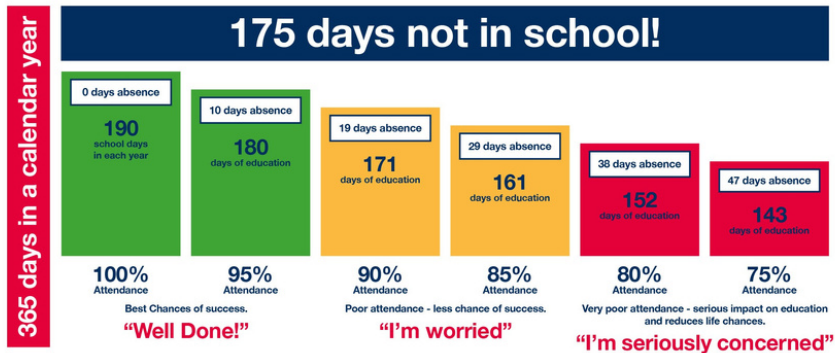
This week's attendance...

- Class 1 - 100%
- Class 2 - 95.98%
- Class 3 - 98.28%
- Class 4 - 96.67%
- Class 5 - 98.9%

Aim for 100% attendance!

Good attendance means...

Being in school at least 95% of the time or 180 to 190 days



Newsletter

Scarecrow Competition!

1st Prize - Family ticket to West Midlands Safari Park - ScareCROW

2nd Prize - £50 voucher for The Bennett's End Inn - Mermaid

3rd Prize - Anchors Away Soft Play - Entry for 2 - Mr Potato Head Bale



Thank you for all the wonderful entries!

Dates for Diary 23 - 24

Autumn Term	
13.11.23	Anti-bullying week: Wear blue to beat bullying
15.11.23	Parent's Evening 2:30pm - 6:30pm
16.11.23	Class 4 Lacon Quick Sticks
17.11.23	Children In Need
4.12.23	Reading miles - Scandinavia
7.12.23	Class 1 Christmas play 1:30pm & 6pm
8.12.23	Autumn term report sent home. Christmas Jumper Day
11.12.23	Class 2 & 3 Christmas play 1:30pm & 6pm
12.12.23	Class 4 & 5 Christmas play 1:30pm & 6pm
13.12.23	Christmas Dinner
14.12.23	Nursery Play 2:15pm
18.12.23	PTA Christmas Disco 5 - 7pm
19.12.23	Christmas Party (Santa) £2 to cover cost of party food. In classes in the afternoon for party games. PTA Christmas Film Night
20.12.23	Break up for Christmas. Maths Problem Solving am/ Board games pm
Christmas Holidays	

Spring Term	
3.1.24	PD day
4.1.24	Children back to school
29.1.24	Parent workshops (maths) this week
5.2.24	Safer Internet Week: whole school focus on safety and assembly ran by digital leaders
8.2.24	PTA - Valentine's Disco Reading miles - The Galapagos Islands
9.2.24	Last day of half term
February Half term	
19.2.24	Back to school
7.3.24	World Book Day
8.3.24	Science Fair @ Lacon Childe
15.3.24	Spring term reports sent home
18.3.24	Pupil Progress meetings this week
21.3.24	Parent's evening Autism Awareness Day: Funny Feet (odd shoes/ socks) Reading miles - New Zealand
22.3.24	PTA - Egg Hunt Last day of term Maths Problem Solving am/ Board games pm
Easter Holidays	
Summer Term	
8.4.24	Back to school
2.5.24	Mental Health Awareness Day - activities in classes/breaktime
6.5.24	Bank Holiday
13.5.24	SATs week
15.5.24	New Reception Meeting for Parents
20.5.24	Reading miles - Goa
24.5.24	Last day of half term
May Half term	
3.6.24	Back to school
19.6.24	Sports Morning (athletics/ field events) No parents
27.6.24	Sports Afternoon - with parents PTA - Strawberries and Cream
28.6.24	PD day
12.7.24	Summer reports sent home
13.7.23	PTA Colour Run
17.7.24	Reading Miles - France
18.7.24	PTA - CHCA's Got Talent PTA Leaver's disco
19.7.24	Leaver's Play Last day of term: Maths Problem Solving am/ Board games pm
Summer Holidays	

Ludlow Community

Free information, advice and support

Helena Lane House

20 Hamlet Lane, Ludlow SY8 2NP

Every Monday 9.30–11am
and
Every Wednesday 1.30–3pm

You can chat, have a coffee and see how we can help you with:

- Housing support
- Children's health and wellbeing
- Healthy living advice
- Dementia support
- Family life
- Home fire safety
- Domestic abuse support
- Drug & alcohol support
- Financial advice
- Getting older

and lots more!



Shropshire
Council

- *Would you like to know more about why sleep is important for our health and emotional well-being?*
- *Does your child struggle with their sleep?*
- *Would you like to access support to help improve sleep and bedtime routines?*
- *Would you like to meet other parents/carers to share and discuss experiences?*

SLEEP TIGHT WORKSHOP

The workshops are delivered virtually via MS Teams or face to face at a venue in Shrewsbury. All you need for the virtual groups is an email address and an electronic device, and we will talk you through the rest.

Our workshops run for 5 weeks from the start date excluding the School Holidays.

**Starts on Friday 12th January 2024 from 09.30am to 11.30am
in Shrewsbury, venue to be confirmed.**

**Starts on Friday 12th January 2024 from 12.30pm to 2.30pm
Virtually via MS Teams**

**Starts on Friday 23rd February 2024 from 9.30am to 11.30am
in Shrewsbury, venue to be confirmed.**

**Starts Friday 23rd February 2024 from 12.30pm to 2.30pm
Virtually via MS Teams**

To book a place on one of our workshops or for further information on the workshops we run please contact the Parenting Team by:

Emailing Parenting.team@shropshire.gov.uk

Or call us on 01743 250950



If you would like to find out about other services the Parenting Team offers please email Parenting.team@shropshire.gov.uk or call us on 01743 250950



PARENTING HELPLINE

available on
Tuesdays and Thursdays from 9.00am to 12.30pm
Call us on 01743 250950

Parenthood can be extremely rewarding and enjoyable. It can also be demanding, frustrating and exhausting. Shropshire Council's Parenting Team is here to support parents and carers to raise healthy, well-rounded children in a loving and stable environment.

Do you have any questions around child development and parenting?

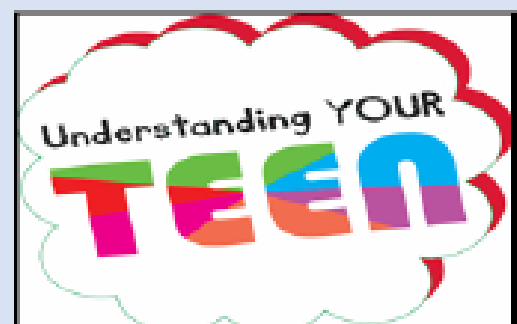
Why not call our Parenting Helpline where one of our trained

Parenting Practitioners will be ready to listen.

(Please note the Parenting Helpline will not operate between Christmas & New Year)

If you have concerns about a child's safety or well-being please call

First Point of Contact 0345 678 9021



www.shropshire.gov.uk
General Enquiries: 0345 678 9000

Monday 9-4
Tuesday 9-4
Wednesday 9-4
Thursday 9-6
Friday 9-6
Saturday 10-4
Sunday 10-4

****SEN session every
Sunday 9-10****

**Takeaway cafe open 8-4
Mon-Fri
9-4 Sat & Sun**



Entry

- Under 5's £5
 - 5yrs+ £7
- Toddler Session
Tues/Thurs 9-11:30am £5
- Parties Starting from £13
per head.
- Exclusive Hire Available

To Book, Call,
Message us or book
online.

Walk in slots
available daily.

Booking is
recommended
during school
holidays

WWW.ANCHORS-AWAY-SOFT-PLAY.COM

ANCHORS AWAY

01299 212 514
Unit 1, Old Fellows, New
House Farm Ind Est,
Cleobury Mortimer,
DY148RD

LUDLOW ASSEMBLY ROOMS in partnership with LUDWIG THEATRE ARTS presents

LUDWIG
THEATRE ARTS

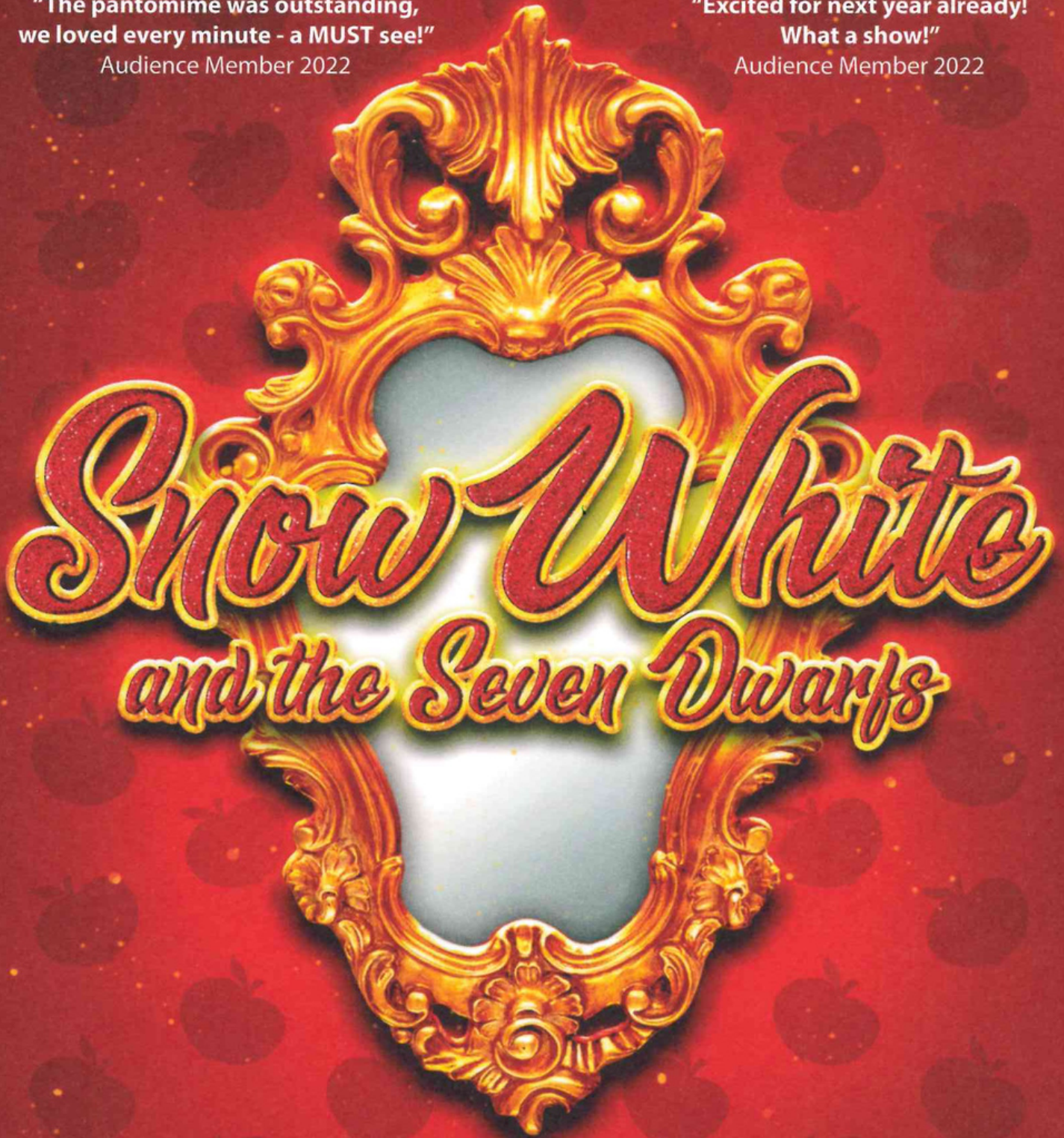
LUDLOW'S TRADITIONAL PANTOMIME!

**"The pantomime was outstanding,
we loved every minute - a MUST see!"**

Audience Member 2022

**"Excited for next year already!
What a show!"**

Audience Member 2022



Snow White and the Seven Dwarfs

 assemblyrooms
ludlow

12 - 30 DECEMBER 2023

Box Office 01584 878 141 Online ludlowassemblyrooms.co.uk

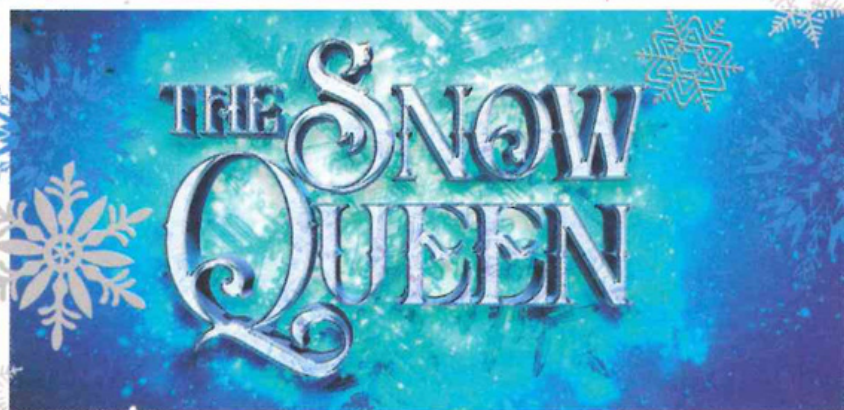
SNOW WHITE AND THE SEVEN DWARFS SHOW TIMES

(Book pre-show supper at *Bill's Kitchen* when you buy tickets online - food from 5.30pm)

Tue 12 Dec	SOLD OUT	1pm (schools)
Wed 13 Dec	SOLD OUT	10.30am (school)
Thu 14 Dec	SOLD OUT	10.30am (schools)
Fri 15 Dec		10.30am (schools)
Sat 16 Dec		1pm and 6pm
Sun 17 Dec		12pm and 5pm
Tue 19 Dec		10.30am (schools) and 6.30pm
Wed 20 Dec	SOLD OUT	10.30am (schools) and 6.30pm
Thur 21 Dec		10.30am (schools) and 6.30pm
Fri 22 Dec		2pm and 7pm <i>Bill's Kitchen</i> pre show supper available
Sat 23 Dec		2pm and 7pm <i>Bill's Kitchen</i> pre show supper available
Sun 24 Dec		11am and 3pm
Tue 26 Dec		12pm and 5pm
Wed 27 Dec		2pm and 7pm <i>Bill's Kitchen</i> pre show supper available
Thu 28 Dec (relaxed)		2pm and 7pm <i>Bill's Kitchen</i> pre show supper available
Fri 29 Dec		2pm and 7pm <i>Bill's Kitchen</i> pre show supper available
Sat 30 Dec		2pm and 7pm <i>Bill's Kitchen</i> pre show supper available



Tickets from:
£14 for children
£17 for adults




The Snow Queen FOR THE YOUNGER THEATRE GOERS THIS CHRISTMAS

Saturday 2 - Saturday 9 Dec (various times)

Step into a magical winter wonderland as **Hans Christian Anderson's** Snow Queen comes to life at Ludlow Assembly Rooms! Adapted by Nick Lane, join us on an **enchancing journey** filled with adventure and friendship, perfect for younger children and families. With a **dazzling set, captivating storytelling**, and delightful characters, this **heart-warming winter tale** promises to be a must-see experience for all!

THIS DECEMBER AS WELL AS OUR PROFESSIONAL PANTOMIME WE ARE THRILLED TO ANNOUNCE AN EXTRA SPECIAL SMALL-SCALE STUDIO PRODUCTION OF THE SNOW QUEEN FOR OUR LITTLEST THEATRE GOERS



Tickets from:
£6 for children
£8 for adults

SCAN ME



Tickets on sale now: ludlowassemblyrooms.co.uk 01584 878141

New players welcome

Clee Hill RFC Mini Junior Rugby



Girls and Boys

Year 9 and below



Sundays at 0930
Starting 3rd September



First session - free

We take boys and girls
from 3 years

FOR MORE INFORMATION PLEASE CONTACT:
Lorna • 07791689312 • cleehillrfuminisection@outlook.com
Clee Hill Rugby Club, Tenbury Road, Knowle SY8 3NL

