

Newsletter

November



Friday 17th November 2023

The swap shop is fully stocked with lots of uniform, coats, wellies and winter hats etc!

We are looking for donations of Christmas jumpers. If anyone has any please bring them to Miss Barnes in the office for the swap shop!

*Also remember if you do need new uniform the link to branded school jumpers/cardigans etc is below.

<https://www.ladsandlassesschoolwear.co.uk/product-category/primary-schools/clee-hill-community-academy/>



Wear blue for Anti-bullying!
Willow in Class 1 with her bear in blue and odd socks!



Some of our children went to Lacon last week for the KS2 Cross Country - they did so well! Results below!



Year 4 watching the BBC live lesson for anti-bullying week.



Please see below poster for details for the sign competition! Entries to be in by Friday 8th December.



KS2 Cross Country Results			
YR 5/6 Boys	YR 5/6 Girls	YR 3/4 Boys	YR 3/4 Girls
1 st Toby B	1 st Fliss M	1 st Jack B	8 th Lily E
2 nd Jack Hu	5 th Evie-Mae M	3 rd Stan W	9 th Evie P
4 th James C	9 th Bonnie G	5 th Oli Brick	11 th Emma H
5 th Jack G	12 th Darcey G	6 th Reed W	12 th Tilly B
7 th Harley Y	14 th Luca F	7 th Misha K	13 th Oakley W
8 th Riley B	15 th Grace M	8 th Cian L	
11 th Riley H		9 th Jono N	
12 th Archie E		11 th Dylan J	
13 th Alfie B		12 th Freddy E	
19 th Bobby M		13 th Bobby C	
20 th Jack Ha		14 th Will J	

This week's attendance...

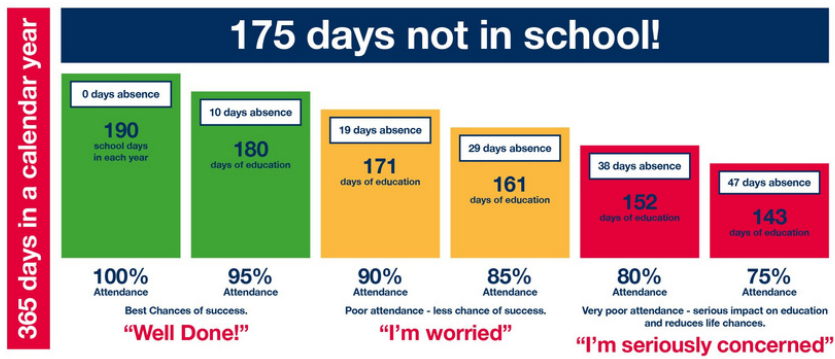


- Class 1 - 97.78%
- Class 2 - 100%
- Class 3 - 96.21%
- Class 4 - 99.33%
- Class 5 - 95.88%

Good attendance means...

Being in school at least 95% of the time or 180 to 190 days

Aim for 100% attendance!



Hall of Fame

Class 1

Praise Certificates: **Maya & Willow**

Writing Rocket: **Ella**

Reading Rockstar: **Joey**

Marvellous Mathematician: **R-Jay**

Class 2

Praise Certificates: **Elodie, Oti & Aria**

Writing Rocket: **Aelfwynn**

Reading Rockstar: **Joe**

Marvellous Mathematician: **Benni**

Super Scientist: **Harrison**

Class 3

Praise Certificates: **Raffi, Isaac & Chase**

Writing Rocket: **Bryony**

Reading Rockstar: **Ivy**

Marvellous Mathematician: **Oakley**

Class 4

Praise Certificates: **Boudicca, Emma & Teanna**

Writing Rocket: **Bobby C**

Reading Rockstar: **Tilly**

Marvellous Mathematician: **Will**

Handwriting: **Teanna**

Class 5

Praise Certificates: **Maisey**

Writing Rocket: **Archie E**

Reading Rockstar: **Evangeline**

Marvellous Mathematician: **Riley G**

Top Table (& some Children In Need Pictures)



Class 4

Class 5: **Phoebe (Support Act)**

Class 4: **Boudicca (Breakthrough Artist), Dylan Jones (Garage Rocker)**

Class 3: **Ruth (Unsigned Act), Skylar (Rock Star), Stanley (Busker), Skylar (Rock Legend)**



Dates for Diary 23 - 24

Autumn Term	
4.12.23	Reading miles - Scandinavia
7.12.23	Class 1 Christmas play 1:30pm & 6pm
8.12.23	Autumn term report sent home. Christmas Jumper Day
11.12.23	Class 2 & 3 Christmas play 1:30pm & 6pm
12.12.23	Class 4 & 5 Christmas play 1:30pm & 6pm
13.12.23	Christmas Dinner
14.12.23	Nursery Play 2:15pm
18.12.23	PTA Christmas Disco 5 - 7pm
19.12.23	Christmas Party (Santa) £2 to cover cost of party food. In classes in the afternoon for party games. PTA Christmas Film Night
20.12.23	Break up for Christmas. Maths Problem Solving am/ Board games pm
Christmas Holidays	

Spring Term	
3.1.24	PD day
4.1.24	Children back to school
29.1.24	Parent workshops (maths) this week
5.2.24	Safer Internet Week: whole school focus on safety and assembly ran by digital leaders
8.2.24	PTA - Valentine's Disco Reading miles - The Galapagos Islands
9.2.24	Last day of half term
February Half term	
19.2.24	Back to school
7.3.24	World Book Day
8.3.24	Science Fair @ Lacon Childe
15.3.24	Spring term reports sent home
18.3.24	Pupil Progress meetings this week
21.3.24	Parent's evening Autism Awareness Day: Funny Feet (odd shoes/ socks) Reading miles - New Zealand
22.3.24	PTA - Egg Hunt Last day of term Maths Problem Solving am/ Board games pm
Easter Holidays	
Summer Term	
8.4.24	Back to school
2.5.24	Mental Health Awareness Day - activities in classes/breaktime
6.5.24	Bank Holiday
13.5.24	SATs week
15.5.24	New Reception Meeting for Parents
20.5.24	Reading miles - Goa
24.5.24	Last day of half term
May Half term	
3.6.24	Back to school
19.6.24	Sports Morning (athletics/ field events) No parents
27.6.24	Sports Afternoon - with parents PTA - Strawberries and Cream
28.6.24	PD day
12.7.24	Summer reports sent home
13.7.23	PTA Colour Run
17.7.24	Reading Miles - France
18.7.24	PTA - CHCA's Got Talent PTA Leaver's disco
19.7.24	Leaver's Play Last day of term: Maths Problem Solving am/ Board games pm
Summer Holidays	

Design a sign for the school entrance, with the theme of Clee Hill.....



We have managed to secure a small amount of funding from TESCOs/ groundwork, which will supply us with paints and materials to 'vamp up' the external entrance to the school. Bryony Snipe has very kindly offered to support the school with her artistic experience, but now we need contributions from the pupils.....

In this competition, we would like you to choose ONE feature of Clee Hill which could be added to the sign and draw this on the paper attached. The winning design will be added to the Entrance sign for everyone to see. There is no cost for this competition.

Your picture might be of:

- The Radar Station
- Sheep (we will need lots of designs for these!)
- The Quarry
- The Rugby Club/ Football Club
- The Rec
- Houses on Clee Hill
- Red Kites or other wildlife
- Our School
- Plants found on the common etc

It is completely up to you. Entries to be returned to school by Friday 8th December.

Ludlow Community

Free information, advice and support

Helena Lane House

20 Hamlet Lane, Ludlow SY8 2NP

Every Monday 9:30– 11am And

Every Wednesday 1:30 –3pm

Running from

Monday 6th November to

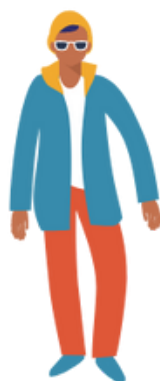
Wednesday 20th December



You can chat, have a coffee and see how we can

- Housing support
- Children's health and wellbeing
- Healthy living advice
- Dementia support
- Family life
- Home fire safety
- Domestic abuse support
- Drug & alcohol support
- Financial advice
- Getting older

and lots more!



Shropshire
Council

- *Would you like to know more about why sleep is important for our health and emotional well-being?*

- *Does your child struggle with their sleep?*

- *Would you like to access support to help improve sleep and bedtime routines?*

- *Would you like to meet other parents/carers to share and discuss experiences?*

SLEEP TIGHT WORKSHOP

The workshops are delivered virtually via MS Teams or face to face at a venue in Shrewsbury. All you need for the virtual groups is an email address and an electronic device, and we will talk you through the rest.

Our workshops run for 5 weeks from the start date excluding the School Holidays.

**Starts on Friday 12th January 2024 from 09.30am to 11.30am
in Shrewsbury, venue to be confirmed.**

**Starts on Friday 12th January 2024 from 12.30pm to 2.30pm
Virtually via MS Teams**

**Starts on Friday 23rd February 2024 from 9.30am to 11.30am
in Shrewsbury, venue to be confirmed.**

**Starts Friday 23rd February 2024 from 12.30pm to 2.30pm
Virtually via MS Teams**

To book a place on one of our workshops or for further information on the workshops we run please contact the Parenting Team by:

Emailing Parenting.team@shropshire.gov.uk

Or call us on 01743 250950



If you would like to find out about other services the Parenting Team offers please email Parenting.team@shropshire.gov.uk or call us on 01743 250950



PARENTING HELPLINE

available on
Tuesdays and Thursdays from 9.00am to 12.30pm
Call us on 01743 250950

Parenthood can be extremely rewarding and enjoyable. It can also be demanding, frustrating and exhausting. Shropshire Council's Parenting Team is here to support parents and carers to raise healthy, well-rounded children in a loving and stable environment.

Do you have any questions around child development and parenting?

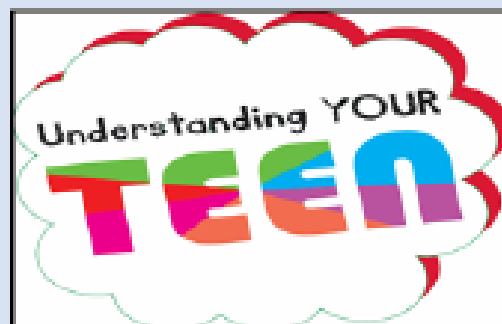
Why not call our Parenting Helpline where one of our trained

Parenting Practitioners will be ready to listen.

(Please note the Parenting Helpline will not operate between Christmas & New Year)

If you have concerns about a child's safety or well-being please call

First Point of Contact 0345 678 9021



www.shropshire.gov.uk
General Enquiries: 0345 678 9000

MOMENTUM GYMNASTICS



Wanting to try a new sport, why not try gymnastics!

momentum gymnastics is new and upcoming gymnastics club based in Cleobury Mortimer and Tenbury Wells

join today to learn exciting new skills, play on the gymnastics equipment and have fun with your friends

classes are available from the ages of 5-16 years



Current Availabilities

Tenbury High School:

Thursday 4:30-5:30 ages 5-10

Saturday 9:30-10:30 ages 5-7

Saturday 10:30-11:30 ages 8-11

Saturday 11:30-12:30 ages 12+

Cleobury Mortimer:

Days subject to interest 2 sessions 1 hour each age 5-10, 11-16

To register your interest, please email

admin@momentumgymnastics.co.uk or for more information on our classes please visit <https://www.momentumgymnastics.co.uk/>

Monday 9-4
Tuesday 9-4
Wednesday 9-4
Thursday 9-6
Friday 9-6
Saturday 10-4
Sunday 10-4
****SEN session every Sunday 9-10****
Takeaway cafe open 8-4
Mon-Fri
9-4 Sat & Sun

Entry

- Under 5's £5
- 5yrs+ £7
- Toddler Session
Tues/Thurs 9-11:30am £5
- Parties Starting from £13 per head.
- Exclusive Hire Available



To Book, Call,
Message us or book
online.

Walk in slots
available daily.

Booking is
recommended
during school
holidays

WWW.ANCHORS-AWAY-SOFT-PLAY.COM

ANCHORS AWAY

01299 212 514
Unit 1, Old Fellows, New
House Farm Ind Est,
Cleobury Mortimer,
DY148RD

LUDLOW ASSEMBLY ROOMS in partnership with LUDWIG THEATRE ARTS presents

LUDWIG
THEATRE ARTS

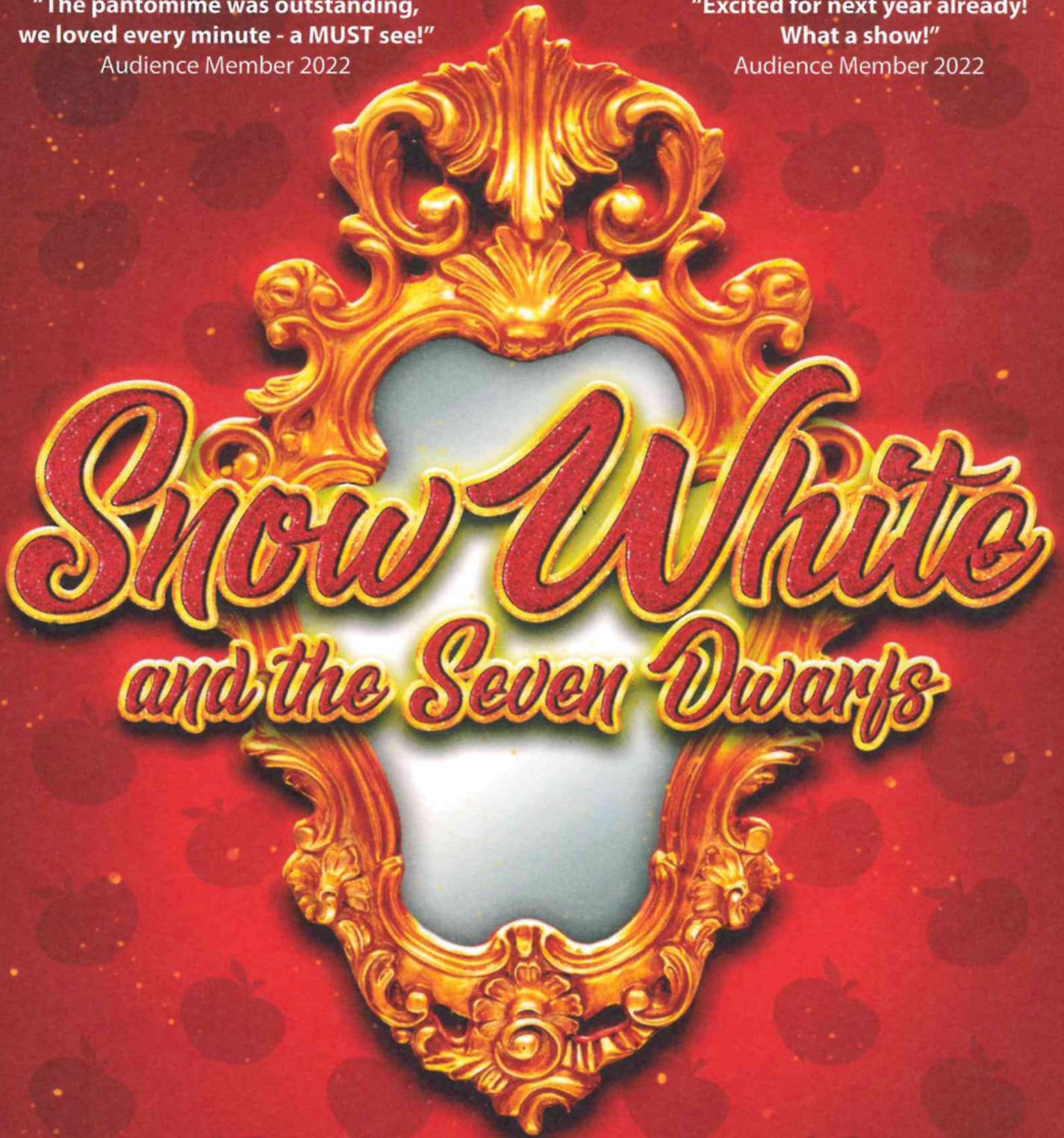
LUDLOW'S TRADITIONAL PANTOMIME!

**"The pantomime was outstanding,
we loved every minute - a MUST see!"**

Audience Member 2022

**"Excited for next year already!
What a show!"**

Audience Member 2022



Snow White and the Seven Dwarfs

 assemblyrooms
ludlow


12 - 30 DECEMBER 2023

Box Office 01584 878 141 Online ludlowassemblyrooms.co.uk

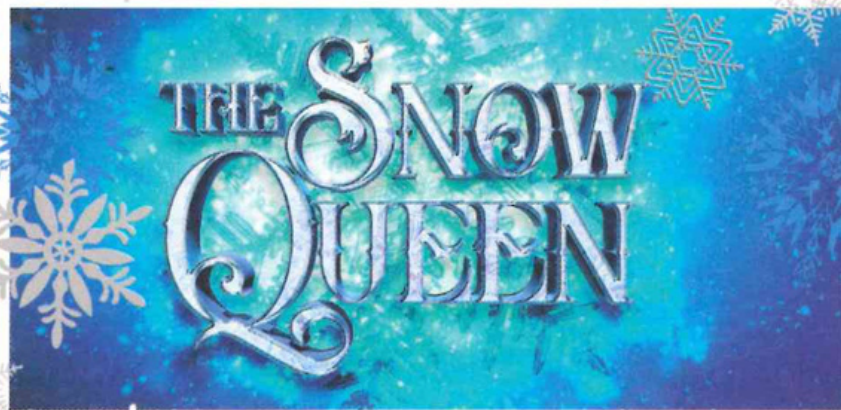
SNOW WHITE AND THE SEVEN DWARFS SHOW TIMES

(Book pre-show supper at *Bill's Kitchen* when you buy tickets online - food from 5.30pm)

Tue 12 Dec	SOLD OUT	1pm (schools)
Wed 13 Dec	SOLD OUT	10.30am (school)
Thu 14 Dec	SOLD OUT	10.30am (schools)
Fri 15 Dec		10.30am (schools)
Sat 16 Dec		1pm and 6pm
Sun 17 Dec		12pm and 5pm
Tue 19 Dec		10.30am (schools) and 6.30pm
Wed 20 Dec	SOLD OUT	10.30am (schools) and 6.30pm
Thur 21 Dec		10.30am (schools) and 6.30pm
Fri 22 Dec		2pm and 7pm <i>Bill's Kitchen</i> pre show supper available
Sat 23 Dec		2pm and 7pm <i>Bill's Kitchen</i> pre show supper available
Sun 24 Dec		11am and 3pm
Tue 26 Dec		12pm and 5pm
Wed 27 Dec		2pm and 7pm <i>Bill's Kitchen</i> pre show supper available
Thu 28 Dec (relaxed)		2pm and 7pm <i>Bill's Kitchen</i> pre show supper available
Fri 29 Dec		2pm and 7pm <i>Bill's Kitchen</i> pre show supper available
Sat 30 Dec		2pm and 7pm <i>Bill's Kitchen</i> pre show supper available



Tickets from:
£14 for children
£17 for adults




The Snow Queen FOR THE YOUNGER THEATRE GOERS THIS CHRISTMAS

Saturday 2 - Saturday 9 Dec (various times)

Step into a magical winter wonderland as **Hans Christian Anderson's** Snow Queen comes to life at Ludlow Assembly Rooms! Adapted by Nick Lane, join us on an **enchancing journey** filled with adventure and friendship, perfect for younger children and families. With a **dazzling set, captivating storytelling**, and delightful characters, this **heart-warming winter tale** promises to be a must-see experience for all!

THIS DECEMBER AS WELL
AS OUR PROFESSIONAL
PANTOMIME WE ARE
THRILLED TO ANNOUNCE
AN EXTRA SPECIAL
SMALL-SCALE STUDIO
PRODUCTION OF THE
SNOW QUEEN FOR OUR
LITTLEST THEATRE GOERS



Tickets from:
£6 for children
£8 for adults

SCAN ME



Tickets on sale now: ludlowassemblyrooms.co.uk 01584 878141

New players welcome

Clee Hill RFC Mini Junior Rugby



Girls and Boys
Year 9 and below



Sundays at 0930
Starting 3rd September



First session - free

We take boys and girls
from 3 years

FOR MORE INFORMATION PLEASE CONTACT:
Lorna • 07791689312 • cleehillrfuminisection@outlook.com
Clee Hill Rugby Club, Tenbury Road, Knowle SY8 3NL

