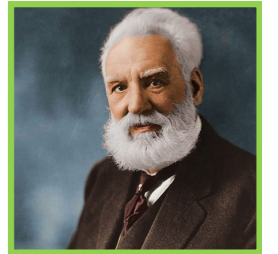


# KNOWLEDGE ORGANISER—Local Study: Our Homes

How did electricity change the way we live?

Alexander Graham Bell was a Scottish inventor.

He was born on March 3rd 1847 in Edinburgh.



Alexander Graham-Bell invented the telephone.

## Substantive Knowledge:

To describe events from the past, using common words and phrases relating to the passing of time

To sequence events on a timeline

To place known events and objects in chronological order

To sequence events and recount changes within living memory

Queen Victoria was the Queen of England between 1837 and 1901

Richer families often lived in town houses in Victorian times and some richer families had servants

There was no central heating in Victorian houses

Lots of Victorian houses are still lived in today

To recognise similarities and differences between houses from the past and houses today.

To know what shops/homes/schools were like in the past.

To know how shops/homes/schools have changed and be able to identify similarities and differences between then and now.

To know why these changes have happened.

To know how we know about these changes - i.e. eye witness reports, interviews, photographs.

To know some of the features of local change in the context of Clee Hill

How have houses changed over time? How have household items changed?



What do we like our homes to look like?  
What do you think homes in the past were like?

How do homes of the past help us to understand what life was like at that time?



## Key Vocabulary:

History, historians, present, now, today, yesterday, last week, before my parents were born, before, after, next, last terraced, detached, cottage

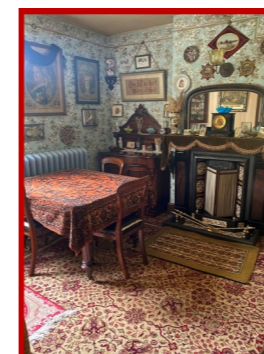
Blists Hill: How has Telford changed over time? What were the houses like? What were the shops like? How were items paid for and wrapped? How has that changed over time?



Squatter's Cottage



Doctor's House



What were the houses of Clee Hill like in the past? How are they different to



Blists Hill: Were all houses the same? Did the rich and poor live the same? How are the houses different?



How were houses in the Victorian times different?

They didn't have central heating, no double glazing and flooring and walls wouldn't have been insulated.