



CLEE HILL COMMUNITY ACADEMY

NEWSLETTER

FRIDAY 7TH NOVEMBER 2025

Dream,

Believe,

Work,

Achieve



ATTENDANCE

Class 1 – 96.99%

Class 2 – 95.96%

Class 3 – 95.22%

Class 4 – 98.21%

Class 5 – 97.36%

Whole School – 96.73%



HALL OF FAME

Certificates

Class 2

Reeva

Isla

Reading rockstar: Nate

Writing rocket: Freddie S

Marvellous maths: Noah

Super scientist: Xena

Class 3

Reading- Oti

Praise- Phoebe, Joey,

Maths- Ella

Writing- Harry

Class 4

Handwriting: Amelia

Praise: Bryony, Archie, Raffia

Writing Rocket: Evie

Super Scientist: Amber

Reading Rockstar: Chase

Marvellous Mathematician: Connie

TTRs: Raffia (Busker, Gigger), Orla (Unsigned

Act, Breakthrough Artist, Support Act),

Amelia (Breakthrough Artist, Support Act),

Scarlet (Garage Rocker, Busker, Gigger),

Dottie (Breakthrough Artist, Support Act,

Headliner).

Class 5

Reading rockstar - Misha

Writing rocket - Dylan J

Marvellous Mathematician - Heidi

Super scientist - Lily

Handwriting - Emma

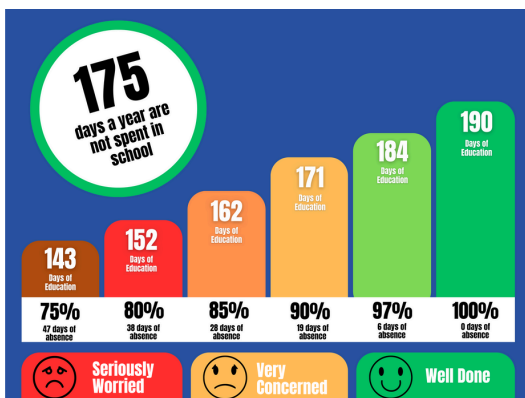
Praise - Tilly, Skylar, Ruth

Bronze times tables - Morrigan, Georgia, Skylar

Good attendance means...

Being in school at least 97% of the time, that's at least 184 days a year.

Target 97% →





CLEE HILL COMMUNITY ACADEMY

NEWSLETTER



Dates for the Diary 2025-2026

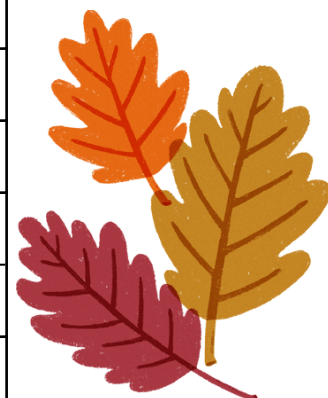
| | |
|--------------------|---|
| 03.11.25 | PD day: staff only |
| 04.11.25 | Children back in school / School Photographs |
| 05.11.25 | Class 4 & 5 - Shropshire Live Music performance at Lacon Childe |
| 07.11.25 | Class 1 trip to Queenswood / Class 3 - Lacon Childe Football Festival |
| 10.11.25 | Antibullying week – Power for good / Odd Socks Day |
| 11.11.25 | 10.15am – 11:15am: Remembrance Service at Village Hall – British Legion |
| 14.11.25 | Children in Need / Learn Cycling Bike Checks |
| 17.11.25 | Class 1 Dentist Talk PM / Bling your Bike Competition |
| 21.11.25 | Class 2 - Lacon Childe Football Festival |
| 25.11.25 | Reception and Y6: Height and weight check |
| 26.11.25 | Class 4 visit to the Discovery Centre |
| 27.11.25 | School Council Bric-a-brac sale PM |
| 28.11.25 | Class 5 - Lacon Childe Volleyball Festival / Autumn term data report sent home / Own clothes for Christmas play - raffle prizes |
| 04.12.25 | Parent's Evening 2.30pm - 6.30pm |
| 05.12.25 | KS2 selected children - KS2 Cross Country / £5 challenge after school sale including PTA Christmas jumper sale |
| 8.12.25 | Class 1 Christmas play 1:30pm & 6pm |
| 10.12.25 | Class 2 & 3 Christmas play 1:30pm & 6pm |
| 11.12.25 | Nursery Pop up Christmas play 2:30pm |
| 12.12.25 | Christmas jumper day |
| 15.12.25 | Class 4 & 5 Christmas play 1:30pm & 6pm |
| | Christmas Dinner – date to be confirmed with the kitchen |
| 18.12.25 | Christmas Party – party food & party games |
| 18.12.25 | PTA Christmas Film Night |
| 19.12.25 | Break up for Xmas, Maths Problem Solving am & Board games pm / Christmas break the rules and Santa run |
| Christmas holidays | |

Work,

Dream,

Believe,

Achieve





Work,

Dream,

Believe,

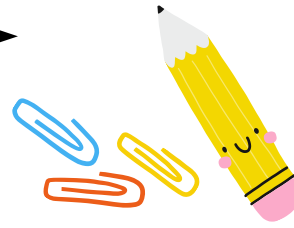
Achieve

Dr Bike



Before our Cycle to school week (Monday 17th - Friday 21st November), I have managed to book someone to come into school who will service the children's bikes on **Friday 14th November**. He will arrive at the start of school and set up an area of the playground. Your child can bring their bike and leave it with him for the day and he will check the breaks, chains, steering etc all for free (I have secured a grant for this). This is available for all pupils including nursery.

We will then start our Cycle week with a 'Bling your bike' competition on **Monday 17th November** where the children can decorate their bike and the Wheelies (our safer travel action group) will then judge each class. Prizes will be awarded in assembly on Friday 21st November.



Several
Times
On
Purpose



Start
Telling
Other
People

Anti Bullying Week

Next week it is antibullying week. On Monday 10th, we will be wearing odd socks to celebrate the importance of being different. Throughout the week, the Antibullying Ambassadors will be leading our assemblies to remind the children of what bullying is and what to do if you are being bullied. During antibullying week, your child may talk more at home about how they are feeling and may use the work bullying more. Remember, unkind behaviour is not bullying unless it is several times and on purpose. If you feel that someone is being unkind to you or doing something which you don't like, then start telling other people. We are a telling school and we encourage the children to tell us how they are feeling. This way we can help them to resolve any issues early before they become a bigger problem.

If you want to find out more about how we approach issues with bullying, please read our Antibullying Policy on the school website which is co-written with staff and pupils. [antibullying_policy-updated-november-2025.pdf](#)

ANTI-BULLYING WEEK 2025
POWER FOR GOOD
 #ANTIBULLYINGWEEK
 Monday 10th to Friday 14th November
ODD SOCKS DAY 2025
 Monday 10th November
 #OddSocksDay #PowerForGood



REMINDER

- **Hot Lunch Orders** – Just a reminder the deadline for ordering hot lunches is 3pm the day before.
- **Long Hair** – Please can we ask that long hair is tied up for school.

SCHOOL NOTICES



CLEE HILL COMMUNITY ACADEMY NEWSLETTER

Work,

Dream,

Believe,

Achieve

October Travel Trackers!

Congratulations to the following children for achieving their travel tracker October badges:

Frankie, Finn, Ronan, Wifred, Ruby, Noah, Odin, Penelope, Connie, Nancy, Scarlett, Jaymes, Freddie, Luca, Oakley, Beth, Scout, Blake, Matilda, Josh, Amelia & Amber.

well done!

PHOTOGRAPHS

We will be sent proofs of the photographs within 10 days, we will then distribute to the children to bring home. Ordering is all online and will take 12 days for delivery.



IF CHILDREN WOULD LIKE TO BUY A POPPY OR WRISTBAND THEY CAN BRING MONEY IN THEY WILL BE ON SALE AT BREAKTIME ON MONDAY 10TH NOVEMBER.





CLEE HILL COMMUNITY ACADEMY

NEWSLETTER

Work,

Dream,

Believe,

Achieve



Children in Need 2025

On Friday the 14th of November children can wear their own clothes for a small donation and will join in our:

25 laps around the track

challenge!!

Local Rugby Coach Jo Yapp will be joining the children for some of their laps



BBC Children in Need



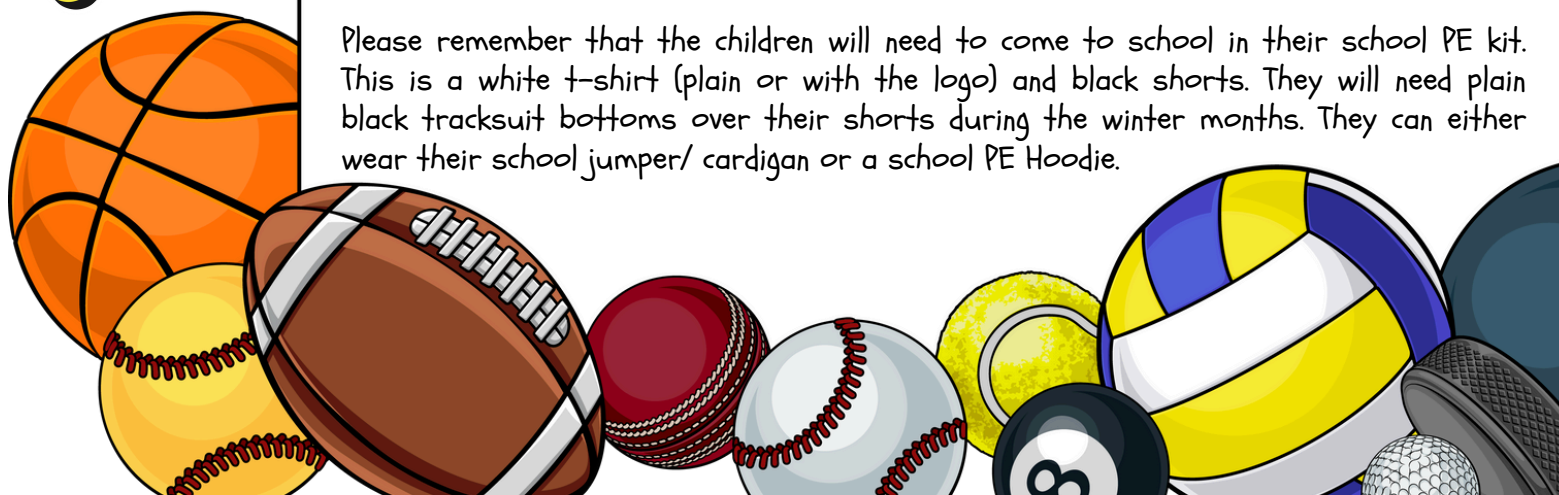
A huge thank you to Jay Snipe for talking to the digital leaders all about 3D printing. We are going to some coding this term, with the aim of getting them printed on his device. It was really amazing to see a 3D printer at work.

PE

Starting this half term, the children will be able to wear their PE kits on PE days rather than changing at school in classes 2,3,4 and 5. This is to increase the amount of time spent on exercise rather than getting changed. The classes have PE on the following days:

- Class 2: Tuesday and Thursday
- Class 3: Tuesday and Wednesday
- Class 4: Monday and Friday
- Class 5: Thursday and Friday

Please remember that the children will need to come to school in their school PE kit. This is a white t-shirt (plain or with the logo) and black shorts. They will need plain black tracksuit bottoms over their shorts during the winter months. They can either wear their school jumper/ cardigan or a school PE Hoodie.



3rd November 2025

Dear Parents/Carers and Students, We are delighted to announce that the merger between the Four Stones Multi Academy Trust and Shropshire Gateway Educational Trust was completed on 1st November 2025 and that the following schools are now part of Four Stones Gateway Trust:

- Clee Hill Community Academy
- Cleobury Mortimer Primary School
- Haybridge High School and Sixth Form
- King Charles I School
- Lacon Childe School
- Stottesdon CofE Primary School
- TDMS (The De Montfort School)

The Trust is also a significant provider of primary and secondary teacher education and development. We are an accredited Initial Teacher Training provider with 140 trainee teachers currently part of the Haybridge SCITT. We provide professional development programmes, specifically for Sandwell and Dudley, but also in the wider West Midlands region through the Haybridge Teaching School Hub and support teacher expertise in maths through the work of the SHaW (Shropshire, Herefordshire and Wolverhampton) Maths Hub.

A Trust is a legal entity that operates a group of schools under a single board of Trustees. These schools are part of a collaboration to raise educational standards and share resources, with the Trust governing their overall management and performance. Key information about the Trust, including our Trust-wide policies and profiles of key personnel and Trustees, can be found on our website: www.fourstonesgateway.org.uk

Trustees and Leaders have agreed the following mission statement for our new Trust:

Four Stones Gateway Trust is a family of like-minded schools that collaborate to provide mutual support, share their good practice and learn from each other. Our students deserve the best and we do this most effectively by working together.

We look forward to working with everyone, including parents/carers, to deliver the best possible educational provision for the 4365 students in our schools. We have 560 staff who we know will do their very best to *provide mutual support, share good practice and learn from each other*, so that we can truly be 'achieving together'.

FOUR STONES GATEWAY TRUST

Love Lane, Cleobury Mortimer, Shropshire, DY14 8PE • 01562 826580

office@fourstonesgateway.org.uk • fourstonesgateway.org.uk

Four Stones Gateway Trust is a company limited by guarantee registration number 9115941





In our consultation, we promised that school life will remain relatively unchanged, even though the merger is a new chapter that will bring opportunities across our schools. We remain committed to this promise but also to supporting all our schools to continue to improve, both individually and together, as a larger collaborative. We want to assure parents/carers that school and Trust leaders will always endeavour to make decisions with children, young people and the different communities we serve at the heart of our thinking.

For parents/carers, channels of contact with schools remain the same, however if you have any feedback or queries on the work of the Trust, then please do not hesitate to contact us.

Yours faithfully,

Mark Pollard
Chief Executive Officer





CLEE HILL COMMUNITY ACADEMY

NEWSLETTER

Work,

Dream,

Believe,

Achieve

Dear Parents / Carers,

Re: Recent Local Incident and School Safety Procedures

You may be aware of a recent critical incident (lockdown) that occurred in the local Worcestershire area. While this incident did not take place on or near our school site, we understand that it may have caused some concern within our community.

The safety and wellbeing of our students and staff are our top priorities. We want to reassure you that we have clear and well-practised procedures in place to deal with a range of emergency situations, including lockdowns. These procedures are designed to ensure that everyone knows how to respond calmly and safely should we ever need to secure the site.

We regularly carry out lockdown drills, alongside our fire evacuation drills, so that both students and staff are familiar with what to do. During a lockdown, staff follow established protocols to ensure all students are kept indoors, doors are secured, and normal activity is paused until an all-clear is given.

It is important to note that, in the event of a real lockdown or emergency, parents and carers should not come to the school or contact students directly. While this instinct is completely understandable, doing so could interfere with emergency services and make it harder for staff to manage the situation safely. The school will communicate updates through our usual channels as soon as it is safe and advised to do so.

Following the recent local incident, we have reviewed our security measures and emergency procedures in line with guidance from the DfE and emergency services. We are satisfied that our existing arrangements remain robust and effective.

We recognise that news of local incidents can be unsettling. If your child has been affected or wishes to talk about their concerns, our pastoral and safeguarding teams are available to provide support.

Thank you for your continued support and understanding as we work together to keep our school a safe and reassuring environment for everyone.

Yours sincerely,

Mrs Little



CLEE HILL COMMUNITY ACADEMY NEWSLETTER

Work,

Dream,

Believe,

Achieve

A huge thank you to Robyn, Chloe, and Sharn for their incredible work running the PTA over the last few years. Their dedication has been instrumental in raising vital funds for our school, and we are so grateful for everything they have done. They will be officially stepping down from their roles at the upcoming AGM.

As we move forward, we are excited to announce a change in our PTA structure and the introduction of some fantastic new events on the calendar.

We invite all parents and guardians to our Annual General Meeting (AGM) on February 26th to discuss the new structure and get involved. We are looking for volunteers to help with upcoming events—any time you can spare would be greatly appreciated. As a token of our thanks, we are introducing a new incentive: any parent who volunteers their time will receive one free event entry for their child.

Finally, we need help with wrapping presents for the end-of-term celebrations. Please get in touch if you are able to lend a hand!

Jo Hirons
Treasurer



PTA NEWS

Clee Hill PTA Christmas Jumper Swap Shop

Get ready for the festive season sustainably and at a bargain price!

The Clee Hill PTA is hosting a Christmas Jumper Swap Shop. Donate your unwanted Christmas jumpers and pick up a "new to you" one.

Sale after school 5th of December 2025!

All jumpers £2!!



Donations to be left in reception by the 3rd of December

CLEE HILL ACADEMY CHRISTMAS RAFFLE COLLECTION

NON-UNIFORM DAY ON NOVEMBER 28TH!

CHILDREN ARE INVITED TO COME DRESSED IN THEIR OWN CLOTHES ON FRIDAY, NOVEMBER 28TH. IN RETURN, WE KINDLY REQUEST A DONATION OF A RAFFLE ITEM APPROPRIATE FOR YOUR CHILD'S CLASS CATEGORY

- CLASS 1- TOILETRIES
- CLASS 2- SAVOURY FOOD
- CLASS 3- SWEETS & CHOCOLATES
- CLASS 4- CAKES AND BAKES
- CLASS 5- DRINKS

DONATIONS WILL BE USED TO MAKE HAMPERS TO RAFFLE AT CHRISTMAS PLAYS. THANK YOU FOR YOUR CONTINUED SUPPORT!



CLEE HILL COMMUNITY ACADEMY NEWSLETTER

Work,

Dream,

Believe,

Achieve



Ring Bells for Christmas

at
CLEE HILL VILLAGE HALL
SATURDAY 6th DECEMBER
7-9pm

**Tickets (limited) £10 inc. seasonal goodies,
Tea/Coffee**

**(please bring your own soft drinks/alcohol)
Raffle**

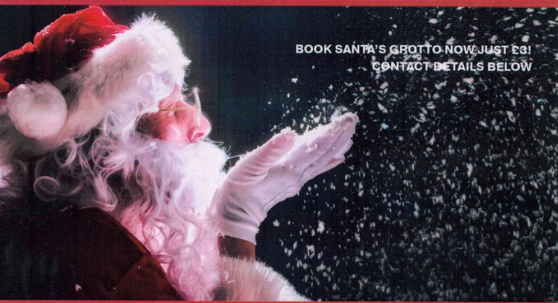
Donation from Proceeds to Clee Hill Community Academy

Call 01584 892050 or 01584 890834

WHAT'S ON!

KNOWBURY MEMORIAL HALL'S CHRISTMAS FAIR!

BOOK SANTA'S GROTTTO NOW JUST £8!
CONTACT DETAILS BELOW



Sunday 23rd November 11am to 2pm

**CRAFT STALLS
SANTA'S GROTTTO
GAMES
FESTIVE FOOD
& DRINK!**



JOIN US FOR A
MAGICAL DAY!

CAYNHAM ROAD
KNOWBURY
LUDLOW
SY8 3JL



PARKING AVAILABLE
FULL WHEELCHAIR ACCESS

CALLING ALL STALLHOLDERS! TO BOOK YOUR TABLE

EMAIL: KNOWBURYMEMORIALHALL@GMAIL.COM, MESSAGE: 07926 985620

OR VIST US ONLINE: KMH1958.CO.UK



The Magic of Christmas
At
Knowbury Memorial Hall

Sunday 14th December
3pm - 5.30pm
fun guaranteed!

£5
Includes buffet

Book now!
Online: kmh1958.co.uk
Message: 07356 286266

**FAMILY CHRISTMAS PARTY
& KIDS' DISCO!**
Plus a visit from Santa!



CLEE HILL COMMUNITY ACADEMY NEWSLETTER

Work,

Dream,

Believe,

Achieve

Understanding your child From toddler to teen

- Would you like to know more about your child's development?
- Do you need help and support to understand your child's behaviour?
- Would you like a chance to meet with other parents and carers with children of a similar age?

Join us for one of our free virtual or face to face groups, our next groups start:

- Understanding Your Child Group 12th January 2026 from 9.30am to 11.30am St Giles Primary, Shrewsbury
- Understanding Your Child Group 13th January 2026 from 6.00pm to 7.30pm Little Explorers, Ditton Priors
- Understanding Your Child SEND Group 14th January 2026 from 10.00am to 12.00pm Severdale Academy
- Understanding Your Child Group 14th January 2026 from 1.00pm to 3.00pm Virtually via MS Teams
- Understanding Your Child Group 14th January 2026 from 1.00pm to 3.00pm St Lawrence Primary, Church Stretton
- Understanding Your Child SEND Group 15th January 2026 from 9.00am to 11.00am Clee Hill Community Academy
- Understanding Your Child SEND Group 15th January 2026 from 1.00pm to 3.00pm Virtually via MS Teams
- Understanding Your Child Group 16th January 2026 from 9.30am to 11.30am Highley Primary School

All our groups run for 10 weeks from the start date excluding the School Holidays.

SEND groups are for parents/carers of Children who might have special educational needs and disabilities, no formal diagnosis is needed to attend the groups.

To book a place email Parenting.team@shropshire.gov.uk or call 01743 250950

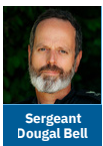
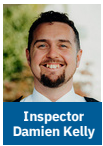
Find more free online courses at inourplace.co.uk/shropshire



Meet your safer neighbourhood team

Officers can be contacted on the below numbers concerning community issues. To report a crime in progress call 999 and for non-emergencies, report online at www.westmercia.police.uk/report. If you are unable to report online, you can contact us via the 101 non-emergency number.

Ludlow (ludlow.snt@westmercia.police.uk)



Information correct at date of publication (October 2025).

WHAT'S ON!